

COMPANY PROFILE



doors windows
cocif.com

Company in Brief

1. Name of the Company: **COCIF Società Cooperativa**
 - a. Address: **Via Ponte Ospedaletto 1560
47020 Longiano FC, Italy**
 - b. Telephone: **+39 0547 56144**
 - c. Fax: **+39 0547 54094**
 - d. E-mail: **info@cocif.com**
 - e. Website: **www.cocif.com**
 - f. Establishment: **1945**
 - g. Type of Company: **Cooperative**
 - h. Scope of Work: **Production of wooden doors and windows**
 - i. Approximate no. of employees/workers: **420**
 - l. Turnover 2009: **Euro 73,500,000.00**
 - m. Main reference Banks: **UniCredit, Italy
Banca Intesa San Paolo, Italy
Banca Popolare dell'Emilia Romagna, Italy**
 - n. Main International Certifications: **ISO 9001:2000
BM TRADA for fire-rated doors**
2. Contacts:
 - a. President & Legal Representative: **Luca Benedettini**
 - b. General Manager: **Piergiuseppe Cataldo**
 - c. Export Managers: **Matteo Pederiva
Pierluigi Lasagna
Cristian Santandrea
Samuele Galanti**
 - e. Middle East Marketing Office: **Arjaan Tower
Office 805 -Xport
Dubai Media City
Dubai - UAE
Tel +971 4 4347172
Fax +971 4 43243040
Jihad Messarra +971 50 5588037
Mohammed Haroon +971 50 9197002
cocif@xportemirates.com**

Cocif, History

The cooperative was established in August 7th 1945, registered under the company name "Falegnami Cooperative" and with its premises in Savignano sul Rubicone.

The initiative started from a small group of workers who, during the difficult years of post-war, decided to join their strengths together to undertake craft joinery work in the premises of a small rented establishment.

After the company name changed to "Joinery Construction Cooperative", in 1959, the business focused on specialized door manufacturing processes and wooden interiors and the premises were moved to via F.lli Bandiera, where the company acquired an area that spread over 3,000 m² and erected a building of 1,000 m².

Year 1967 marked the commercial transformation that revealed itself to be fundamental and successful for the firm: the full service craft production was abandoned for the exclusive mass production of doors.

Eight years after 1976, merging with the ex Joiners Cooperative from Cesena, which used to produce windows, allowed the firm to complete the range of products they offered.

Their progress did not stop there.

It was 1980 when in a record time of only 15 days, the door factory was transferred to the new establishment in Longiano a Ponte Ospedaletto, an area purchased a year earlier with the intention to offer the space required for productive development and to join the productions of windows and doors as well as offices in one single building.

From 1989 COCIF started to get involved in real estate operations and investments, with the purchase of land and the construction of residential structures, culminating with the design of a large multipurpose centre, COCIF's Residential Centre, entrusted to the architect Paolo Portoghesi in 1992. The following year, in 1993, Villa Rosa was purchased; this became the representation office for the company.

In 2003, after a series of expansions of the Longiano plant, COCIF acquired the Gierre di Dovadola, an industrial area of 28,400 m² where since February 2004 the company started to produce external doors and windows. Then we reach 2006, when the production of rolling-shutter boxes and staff beads for doors started in a new factory of 8,500 m², next to the establishment in Ponte Ospedaletto in Longiano.



Below is a summary of milestones in COCIF's history:

1945:

Constitution of the Joiners Cooperative "**Falegnami Cooperative**".

1959:

New denomination as Joinery Building Cooperative (COCIF).

1967:

Start-up of the industrial mass production exclusively of doors

1976:

Merging with the ex Joinery Cooperative from Cesena. Start-up of windows production.

1980:

New single large building, in Longiano, along via Emilia.

1989:

The first intervention in the real estate field. The Building and sale of 34 residences in Savignano S/R and the purchase of 66,190 m² of land in the area of Ponte Ospedaletto.

1990:

Creation of a Commercial Business Centre intended for shops and offices over an area of 3,573 m²

1991:

The realization and sale of 6 residences in Savignano and purchase of an industrial factory over an area of 1,570 m² next to the factory of Longiano.

1992:

The start of construction and sale of 46 residences over an area of 1 5,974 m² in the region of Longiano and initiation of the design, entrusted to Arch. Paolo Portoghesi, of COCIF Residential Centre with an additional 120 residences, a commercial centre and a hotel. COCIF Interiors Design was born, with furniture and decorative articles of great value and design. Opening of an exhibition area next to the establishment.

1993:

Purchase of Villa Rosa, representation office for the Company.

1994:

Purchase of a 3,300 m² plot of land next to Villa Rosa and of an area of 47,050 m² in the region of Monte di Longiano.

1995:

Purchase of the Agricultural Establishment Sacchetta, 612 hectares in the location of Porto Viro (RO).

Building a new storage building for the windows department of 7,500 m² which allowed strengthening and reviewing the whole layout.

1996:

Upgrading of the special polishing department for doors by extending the department of another 600 m² covered.

2001:

Purchase of land of a total of 97,300 m² in the region of S. Angelo (Gatteo's municipality).

2002:

New storage building of 4,600 m² to equip as an assembling unit for windows and deliveries.

2003:

Acquisitions: Factory of Gierre di Dovadola over an area of 28,400 m², Agricultural Establishment Baglioncina of 134 hectares, next to Valle Sacchetta in Porto Viro; lands for a total of 1 5,000 m² next to the Longiano establishment; agricultural land in Longiano covering 58,600 m².

Start of building of the first 76 residences of COCIF Residential Centre over an area of 66,190 m² in the territory of Longiano.

2004:

Start of construction of the new storage building of 8,500 m² for the own production of door-frames and architraves.

2005:

Start of building of a commercial centre of 1,400 m² covered, in the area of Ponte Ospedaletto near COCIF Residential Centre.

2006:

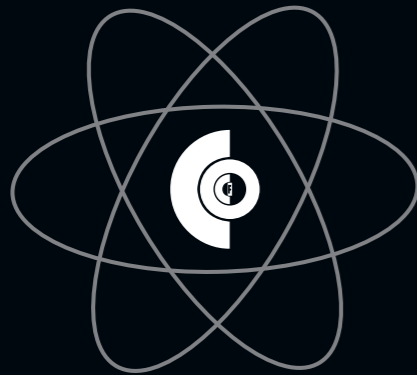
Start of production of door-frames and architraves.

2009:

Acquisition: Factory "Mastes", leading producer of security-doors.

2010:

Acquisition: Factory "Adria Glass", producer of glass.



Values and Company Mission

1. To operate correctly, coherently, reliably and transparently.
2. To contribute to the creation of new employment through financial investments.
3. To give priority to customer satisfaction with regard to prices and the quality of products and services.
4. To sustain the social and cultural development of the region through direct actions and initiatives.
5. To consider the individual and collective contribution to the working process as an essential element of the overall development of the company, in the conviction that people, with their creativity and commitment, are an important factor in successfully improving the quality of the company's products and services.
6. To give encouragement and commitment to solidarity.
7. To play an active role in asserting the values and prestige of the social economy.
8. To aim to achieve a positive economic result and company growth, increasing its economic value and paying for the capital subscribed by the associates.
9. To build a working environment that always focuses on safety, satisfaction and commitment.
10. Always, and under any circumstances, to act as a company that has made social responsibility one of its core values.

COCIF Strategy

The three year period 2004-2006 recorded the total fulfillment and the punctual realization of development plans that COCIF was aiming to achieve. The investments organization and the numerous structural implementations of management and production capacity further strengthened the company.

COCIF retained and developed its undisputed leadership and opened its doors to international markets experiencing significant success, especially in those featuring the highest added value such as Japan and continental Europe.

The company experienced dimensional growth on the Italian market, even thanks to the improved positioning of top range house products, of new products for HOSPITAL and public construction, with the objective to maintain and strengthen its leadership position on the market.

The expansion in international markets with a special focus on North America, Russia, Japan, South East Asia and Middle East markets.

The strengthening of efficiency and profitability procedures that have characterized COCIF over the last years, through the steady improvement of its own lay-out.

The enterprise should prepare for innovation and technical development through new organizational investments and new production lines.

Aim for the completion of the industrial production cycle in order to gradually increase its autonomy, its quality levels and profitability with determination.

These are COCIF's strategic objectives.

After the success enjoyed with the launch of the new product series of HOSPITAL Door, the line of doors intended for HOSPITALs and health structures, which was subsequently complemented with the series Wellness, COCIF implemented new structural investments: As, for example, the creation of a factory for the production of semi-finished products for rolling-shutter boxes and staff beads employed in door manufacturing.

This latest investment opens new doors for the improvement of the firm's competitiveness, of quality control and of production autonomy.

On the diversification front, COCIF completed the addition of Valle Baglioncina to the environmental oasis of Valle Sacchetta in Porto Viro, the building of a hotel with restaurant in the same area and made progress in the realization of a multipurpose complex in the Loggiano region, featuring both residential and commercial units.

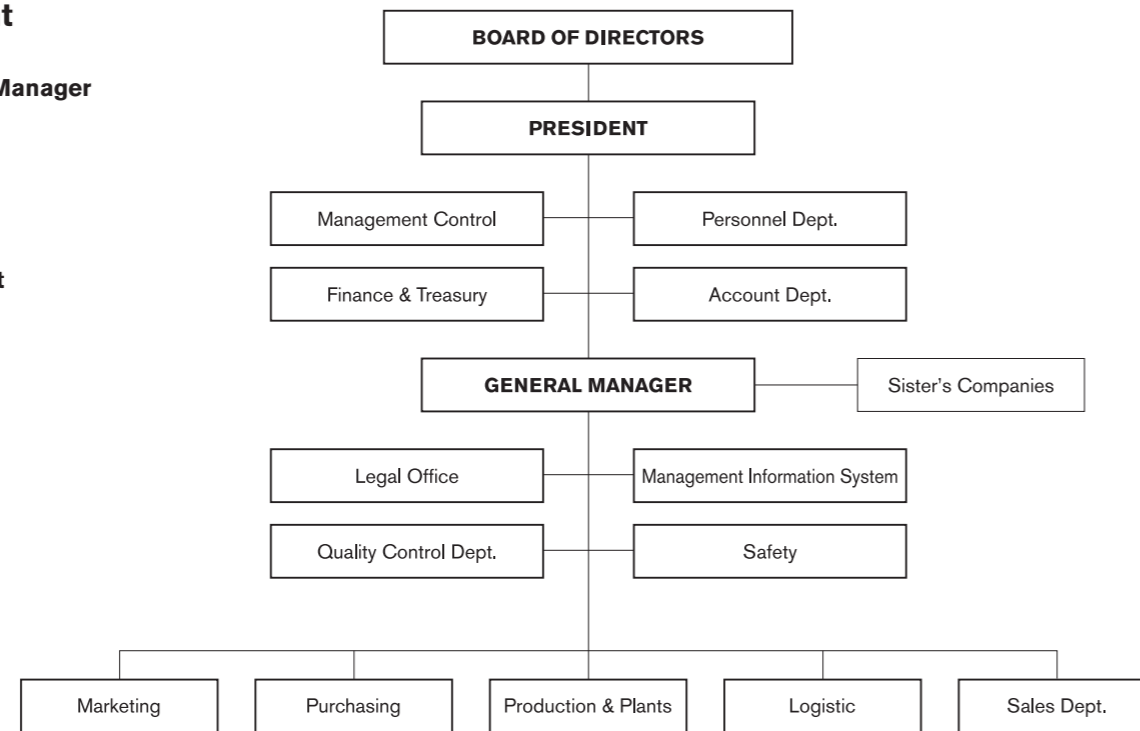
Managing Directors

Operations Management

1. Cataldo Piergiuseppe **General Manager**

Board of Directors

1. Benedettini Luca **President**
2. Canducci Renzo **Vice President**
3. Barberini Luigi
4. Brandolini Daniele
5. Camprini Giorgio
6. Casadei Giancarlo
7. Fabbri Mauro
8. Gasperoni Maurizio
9. Guglielmi Matteo
10. Lugaresi Milco
11. Marconi Luigi
12. Pederiva Matteo
13. Scaini Paolo



Organization's Structure

COCIF's operational interactions are run by an established and efficient internal management organization that has steadily developed and grown.

Its management philosophy is oriented towards a high level of information sharing and, above all, towards the integration of decision-making processes on various levels involving all operational aspects and functions.

Responsibilities are allocated in such a way that both production and commercial and administrative management work together to achieve maximum effectiveness and to ensure that management is subject to the strictest and most productive of control.

Thanks to the widespread use of information technology, COCIF is among Italy's most modern and efficient companies.

In COCIF, employment policy is one of the issues that is mostly examined. Even if currently 297 out of 434 employees are collaborating partners, participation to the company's life develops through their strong involvement, which consolidates its productive efficiency and the sharing of enterprise goals.

Distribution of Personnel according to different age groups

Employees	Men	Women	Total	%
up to 20 years old	6	Nil	6	1.38
21/30 years old	103	8	111	25.58
31/40 years old	151	29	180	41.47
41/50 years old	79	15	94	21.66
51/60 years old	32	8	40	9.22
Over 60 years old	old	3	Nil 3	0.69
Total	374	60	434	100

Distribution of Personnel According to title of study

Employees	Men	Women	Total	%
Graduate Qualification	11	4	15	3.45
Secondary School Leavers	67	20	87	20.05
Middle School/Primary				
School Qualifications	296	36	332	76.5
Total	374	60	434	100

Distribution of Personnel depending on the level

Employees	Men	Women	Total	%
Directors	5	1	6	1.38
Managers	3	Nil	3	0.69
Accountants	31	3	34	7.83
Technicians	26	5	31	7.14
Administrators	4	19	23	5.3
Production	305	32	337	77.66
Total	374	60	434	100



Products

Vivid imagination in Tonino Guerra's collection, solid and versatile tradition in the Basic line, elegant harmony in Miti and precious sophistication in Halley styles.

Sottsass Associati designer strength, Gae Aulenti's refined style, Contract's efficient technology for hotel establishments, HOSPITAL Doors and Wellness series particular specialization for health care institutes and HOSPITALS and the lively versatility of the Windows line.

COCIF offers the market a wide and versatile range of products, which is unique and competitive in the international context of wooden doors and windows



CONTRACT COLLECTION:

In order to conform to safety and fire regulations, holiday resorts and hotels can now rely upon COCIF's products and technology.

CONTRACT doors, COCIF's brand-new collection of doors for hotels, have been registered and certified by the Ministry of Interior and comply with the strict regulations REI 30 and REI 60 on fire resistance. CONTRACT 6 models come in 14 different paints and 9 veneers and briars.

For your costumers' best comfort CONTRACT doors are on request available in a 38.5 dB-rated sound-proof version.

Featuring a special embossed shock-proof finish, CONTRACT doors can also be equipped with a security handle and lock fitted with anti-panic mechanism and are mechanically or electronically operated by means of a computerized card system.

COCIF's efficient manufacturing methods and CONTRACT's new exclusive models match perfectly, thus meeting any interior-design requirement.



HOSPITAL DOOR COLLECTION:

COCIF's commitment to research and quality for all types of products and technical achievements resulted in a new line of doors specifically designed for HOSPITALS and sanitary premises.

A joint project with Studio Carrara International, HOSPITAL series represents a line of doors whose technical, aesthetic, functional, hygienic and safety features will meet all requirements as set in this specific building sector.

The collection comprises 4 models, all of which are provided with certificates that were released in compliance with the strict standards as required by HOSPITAL construction. Such include REI30 fireproof/soundproof 34 db.

HOSPITAL doors are characterized by state-of-the-art technology and unique design which will perfectly fulfill any architectural and technical requirement.



RUBICONE COLLECTION:

Advanced flexibility, resistance and practicality solutions. RUBICONE derives from a combination of all these features. Aesthetically, the series follows the style of Basic line models, but has a different rolling-shutter box as well as a different type of finishing. An unequalled synthesis of resistance and flexibility, newest RUBICONE series is characterized by ease of installation and practicability.

This collection is aesthetically equivalent to Basic collection from which it differs as for details of door frame and architraves as well as type of finish. (top quality laminate)



WELLNESS COLLECTION:

WELLNESS and comfort can unite with technology and design in order to offer products able to respond to the most demanding of market requirements. Particularly adapted to public contexts including HOSPITALS, surgeries, gyms and offices, these doors designed by the TZ&Z associates studio for COCIF are the result of intense research aimed at creating public environments with a unique touch of humanity and warmth.



BASIC COLLECTION:

The right solution to a myriad of requirements and the most special needs. The doors in the Basic collection underline the prestige and the quality of COCIF production. Simple to install, reliable, extraordinarily versatile, in perfect harmony with every interior; COCIF Basic doors are the most modern and efficient answer to an incredible variety of interior design solutions.

Wood of only the best quality, constant research into technology and production techniques and above all, a vast range of colors and wood make COCIF Basic doors the indisputable market leaders.



HALLEY COLLECTION:

A wide range of doors characterized by extremely valuable finishing and bright pleasant colors. Doors from the HALLEY collection are technically and aesthetically perfect. Discreet, with a linear design, they are produced with high quality wood. Doors from "HALLEY" line can be comfortably inserted into any environment. They meet the tastes of those who love to furnish their home with a touch of refinement and essential elegance.



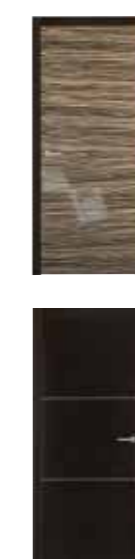
MITI COLLECTION:

Those who love to surround themselves with beauty and harmony can find the answer to their needs in "The MITI" range. Only COCIF doors know how to give such elegant lines, warmth, charm and symmetry. Aesthetic excellence is accompanied by the most sophisticated production technology and high-quality materials. Rich, refined colors and wood bring out the taste and elegance of interiors that recall the charm and prestige of an Italian home.



LINEAR COLLECTION:

The Linear collection is an example of COCIF's great attention towards modern architecture: minimalism, style, design and innovation in one, unmistakable furnishing component. It consists of four different types of doorjambes and a range of essences and combinations of glass and colors created for those who want a house designed with luminosity and minimalism in mind, according to the principles of modern indoor architecture.



NEW ARK COLLECTION:

A collection of lacquered doors that represents no mean feat for COCIF, combining elegance, the charming warm harmony of the classical style, and the rigour and sharpness of the lines. The COCIF interpretation of classical modernity.

The collection consists of 15 models of lacquered doors, in solid, glass and "English" versions.



SOTTASS COLLECTION:

The new interior collection "SOTTASS Associati" originated from the creativity and genius of Ettore SOTTASS, one of the greatest designers in the world. The jewel of COCIF's production, this door collection is enjoying great success in markets worldwide.

An example of COCIF's gift for innovative and modern design and talent for the most sophisticated overall technology. COCIF, Italy's leading producer of wooden doors and windows has always dedicated itself to function, design and innovation.



WINDOWS COLLECTION:

Wooden Windows Cocif production of wooden windows includes two single weatherstripping and two double weatherstripping frames which have been tested and certified in compliance with UNI regulation on air-wind, water-tightness and thermal insulation. Double-weatherstripping Windowframes are also available in 34 db (R2 class), 41 db or 44 db (R3 class) model. A window system based on a frame, box C type and rollino shutter is now available in the following soundproof versions: 37 db and 42 db.

On request they can come with 7 types of external shutters of solid wood.

Alternatively a window system fitted with a pvc or aluminium roller shutter is also available.

COCIF windows are fully compatible with lots of different systems and Technical solutions.



GAE AULENTI COLLECTION:

As well as being one of the world's leading modern architects, GAE AULENTI is one of the greatest exponents of Italian style. Her designs have established new directions that have become a point reference for today's architecture. Cities such as Paris, Venice, Barcelona, and San Francisco, all bear witness to the unique nature of her creative personality. Her work in the fields of industrial and interior design represent today's greatest expression of prestige and functionality.



Wooden - Aluminium

Our long experience in the field of outdoor doors and window frames has given rise to a line of windows which brings together the various finishing of wood for all types of interiors with an exterior finishing in stove-enamelled aluminium. The warmth and beauty of wood combines with the resistance and protection provided by aluminium. For exterior blinds the various models proposed are made entirely from aluminium and the solutions, both on jambs and wallmounted, can be matched to the corresponding window in the best possible way.

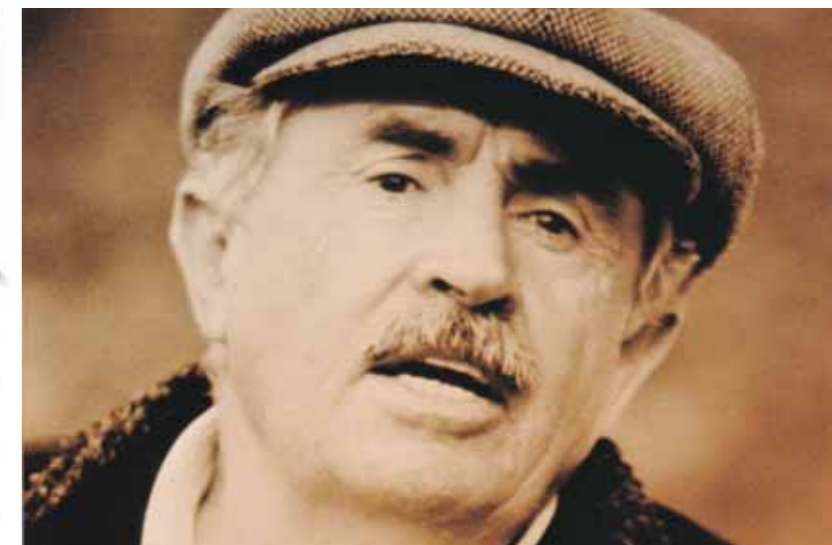


Wooden - PVC

Our long experience in the field of outdoor doors and window frames has given rise to a line of windows which brings together the various finishing of wood for all types of interiors with an exterior finishing in stove-enamelled aluminium. The warmth and beauty of wood combines with the resistance and protection provided by aluminium. For exterior blinds the various models proposed are made entirely from aluminium and the solutions, both on jambs and wallmounted, can be matched to the corresponding window in the best possible way.

TONINO GUERRA COLLECTION:

"A door is a shelter, an obstacle for other suggesting security, protection and solidity. Even though this is what my doors attempt to be, they try to be all this with a stronger dose of humanity. You can savor the fragrance of old country houses where every now and again our minds return to live in order to satisfy a secret nostalgia. To me they appear to have a touch more sweat and a ring of dialect, with the magic of a certain constructive innocence. You could have made them yourself, or perhaps you have the suspicion of having at least suggested the structure of a former presence somehow nestling in your memory."



Project List

Main International Reference Projects

Project Name

Location

Russian Federation

Hotel Radisson SAS
 Hotel AKKORD
 Hotel Riviera
 Hotel Ukraina
 Multifunctional Theatre-Concert Hall
 Prime Minister Building
 Parliament Building
 Hotel Mirage
 Suvar Hotel
 Theater Complex

Kaliningrad, Russian Federation
 Moscow, Russian Federation
 Kazan, Russian Federation
 Moscow, Russian Federation
 Khanty Mansisk, Russian Federation
 Kazan, Russian Federation
 Kazan, Russian Federation
 Kazan, Russian Federation
 Kazan, Russian Federation
 Tyumen, Russian Federation

Ukraine

Hospital Feofania
 Hospital Presidentskaya
 Podol Plaza Hotel

Kiev, Ukraine
 Kiev, Ukraine
 Kiev, Ukraine

Ireland

Tassagard Greens Housing Project
 Ardilea Housing Project
 Radisson SAS Royal Hotel

Saggart, Dublin ,Ireland
 Kilkenny, Ireland
 Dublin, Ireland

Czech Republic

Podvinny Mlyn Housing Project
 Podbaba Housing Project

Prague, Czech Republic
 Prague, Czech Republic

Saudia Arabia

Rosewood Corniche Hotel
 Intercontinental Hotel

Jeddah,KSA
 Al Khobar, KSA

Qatar

Movenpick Hotel Tower
 Apartment Building for
 Khk. Khalid Bin Nasser Al Thani
 Apartment Building for
 Khk. Khalid Bin Nasser Al Thani
 Qatar Tower Office Building
 Client: Mr. Mohamed Zayed Al Khayareen
 Main Contractor: Al Huda Engineering Works

Doha, Qatar
 Doha, Qatar
 Doha, Qatar
 Doha, Qatar

United Arab Emirates

Residential Building at Marsa
 Lady Ratan Manor Residential Building
 Donna Tower
 Developer & main Contractor: Seasif Group
 Jumeirah Business Centre Towers
 Developer: Al Fajer Properties
 Main Contractor: Al Ahmadia
 Mangrove Place Residential Building
 Client: Luxury Real Estate Development
 Main Contractor: Gulf Technical Construction Company

Marina, Dubai
 Silicon Oasis, Dubai
 Silicon Oasis, Dubai
 Jumeirah Lake Towers, Dubai

Libya

Orthopedic Clinic
 Private Clinic
 Brega and Ras Lanuf Higher
 Committee Housing Project
 Hospital
 Private Clinic

Tripoli, Lybia
 Misurata, Lybia
 Tripoli, Lybia
 Swani, Libya
 Boshra, Libya

Algeria

Incubateur Building in Cyberpark Sidi Adbellah
 Main Contractor: Kontek Ins. San. Ve Tic. LTD

Algeriers, Algeria

Sudan

Burg Al Fateh
 Hilton Renovation (now Pullman Hotel)

Khartoum, Sudan
 Khartoum, Sudan

South Africa

Bedford Square Residential Building

Johannesburg, South Africa

Japan

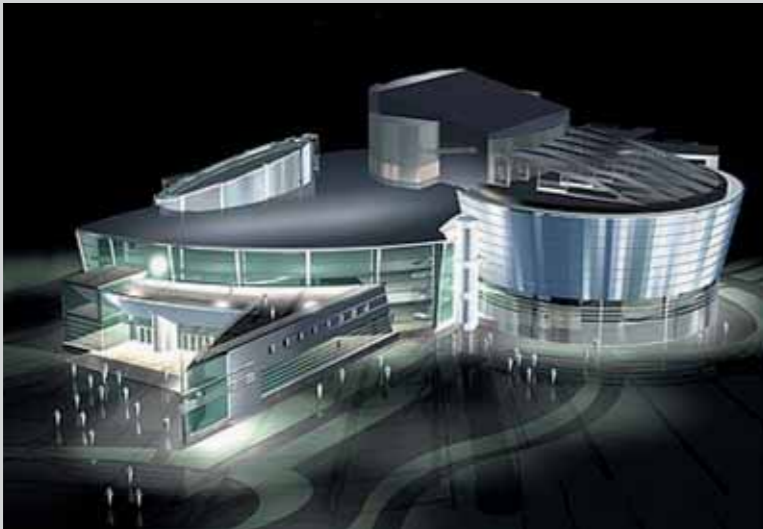
Brillia Mare Ariake Housing Project
 Fukushima Housing Project

Tokyo, Japan
 Osaka, Japan

Hotel Ukraina Moscow – Russian Federation



Projects' Pictures



Multifunctional Theatre-Concert Hall. Khanty Mansisk, Russian Federation



Theater Complex Tyumen, Russian Federation



Podol Plaza Hotel
Kiev, Ukraine



Radisson SAS Royal Hotel
Dublin, Ireland



Podbaba Housing Project Prague,
Czech Republic



Projects' Pictures



Rosewood Corniche Hotel
Jeddah, KSA



Borg Al Fateh
Khartoum, Sudan



Movenpick Hotel Tower Doha, Qatar



Qatar Tower Project Doha, Qatar



Bedford Square Residential Building,
Murray & Roberts Construction
Johannesburg, South Africa



Mangrove Place Apartments Project - Abu Dhabi, UAE

Projects' Pictures



Brillia Mare Ariake Housing Project
Tokyo, Japan



Zhongyin Project,
Shanghai, China



Incubateur Building - Algeria



Donna Towers Silicon Oasis - Dubai - UAE



Jumeirah Business Centre Towers - Dubai UAE



Respect for the environment

COCIF's relation towards the environment is of careful attention and renewed awareness.

During the course of the last years COCIF adapted to the strictest rules that govern environmental control and environmental management of industrial production. In the next three years we foresee further investments so to guarantee that COCIF reaches the environmental excellence for which, even today, the company is recognized to be one of the most environment-friendly firms within its reference area.

A complex and urgent intervention and investment program encourages COCIF's full compatibility with the environment: not only with respect to production procedures but especially in the use of raw materials and products employed during production.

Preference is given to wood varieties originating from countries that are sensitive towards woods conservation issues, to the use of water based paint or paint with reduced solid contents, to production lines in cabins for noise reduction, to a sophisticated process for the recovery of energy and manufacturing waste in addition to the constant monitoring of gas emissions.

Technologically advanced varnishing lines are completely automated in order to maintain a constant level of quality in the finishings and to comply with European directives.

So COCIF commits to value not only the quality of production but also the sensitiveness towards environmentally friendly development.

Company Projects:

The most important interventions started in 1992 when the company decided to change its production procedure radically in order to reduce the use of solvents and therefore improve the environmental conditions both inside the company and outside, in addition to reducing its energy consumption.

A three year program (1993/1995) coordinated the demolition of the old lines and the realization of systems able to use high density varnishes and water based varnishes.

The program provided for the realization of innovative production technologies, which were still at an experimental stage at the time, and for the involvement of varnish producing companies in the project, for the supply of products with a high percentage of solids (which would therefore not release into the environment) and of water based varnishes (completely solvent free).

Results

Thanks to the three year program we managed to reduce the amount of solvent employed and, consequently, over 80% of polluting substances.

Environmental investments 1993/1995:

- Panel varnishing line Profile Line
- Window varnishing line
- Total: 15,000,000,000 Liras

In order to conclude the restructuring cycle, COCIF wanted to monitor the surrounding territory by carrying out environmental tests to check the environment condition in the area of Ponte Ospedaletto and the environmental impact that COCIF had on it.

The environmental monitoring project:

Some of the most knowledgeable experts in the field were involved in this project:

- Prof. Luciano Morselli, department of industrial chemistry and of Materials Science University of Bologna.
- Prof. Eng. Maurizio Mancini, department of Health Engineering in the University of Bologna
- Dr. A. Gorni, environmental Laboratories SpA, ENI Group Environmental Hygiene and Protection Centre Ferrara
- Dr. Leonello Attias, Superior Institute of Health - Environmental Impact Assessment Department
- EPA (Environmental Protection Agency- USA), the supplier of the table of data regarding concentrations for the devaluation of risk
- Fuel Experimental Station - S. Donato Mil.se (air micro-pollutants originating from traffic)

The project required a preliminary study for the research and analysis of meteo-climatic data to determine the speed and direction of the wind over the course of the year, the analysis of COCIF production procedure, the identification of productive settlements in the surrounding area and the determination of areas of maximum concentration of substances emitted.

Over a period of 18 months, in the most varied conditions (when COCIF was operating and when it was not), the sampling areas were identified and tests were carried out. The investigation ended in October 1998.

Conclusions:

Concentrations of the main substances present in the air that were determined when falling, both when the COCIF factory was operating and when it was not, are completely comparable in order of size.

Basically, COCIF activities do not have an influence on the increase in concentrations of the substances examined. In particular, some substances were proved to have a higher average value when the factory was not active rather than when the factory was in operation.

This is unmistakably related to inflows from other sources (e.g. other production sources and vehicle traffic).

The analysis of concentration values in the air of the substances in question, does not indicate particularly dangerous levels for the resident population, despite the positive results of the environmental audit, COCIF never stopped thinking about the quality of its working environment. In particular, further investments of particular significance were carried out so to improve the work environment and to reduce the dispersion of substances outside.

Environmental investments 1998:

- Special parts and gas purification project.
- Total investment of: Euros 1,000,000.00.

The program intended to reduce drastically the emissions of organic volatile substances into the atmosphere, also including special productions emissions (which are not included in the main lines, towards which previous investments were destined).

It intended to cut down waste production and introduce gas purification at the end of the productive cycle, in order to eliminate any leftover residues permanently.

The above program became necessary in order to retain and improve the high quality of the final product and to simultaneously reduce the impact on the environment.

Results achieved:

After the introduction of the technical product mentioned, the company experienced:

- A 70% reduction of waste produced.
 - A reduction of working cabins from 5 to 1 while still producing the same quantities.
 - A reduction in the air intake volume and therefore a smaller filtering system.
- Results regarding dust emissions into the atmosphere and the limits permitted by ASL.
- Maximum limit allowed: 100 mg/mc
 - COCIF: <5 mg/mc.

Because of the innovative technology employed and the significant reduction and recovery of waste achieved, this intervention was partly funded by the Environment Department of the regional council of Emilia Romagna.

Noise:

With respect to the sound level of the internal environment, noise plays a significant role.

In order to offer to its workers better working conditions, since several years ago COCIF started to situate all machines that were particularly noisy in cabins. Today, when any new technology needs to be acquired for the factory, preference is given to systems that offer the highest level of performance.

In any case, every year the factory is monitored and the company issues mapping documents highlighting the sound situation in every corner of the building. This guarantees that noise levels always remain significantly below the normal limit of tolerance.

VOS (Volatile Organic Substances) Emissions:

Products tested:

- Gallia Tanganika Tinto Door
- Gallia Laccato Door
- Pino Mordenzato Frame
- Varnished Frame

Result achieved:

Total VOS: <650g/m3 (micrograms/cubic meter)

N.B.:

In absence of specific Italian regulations, the company can base itself on the German quality label (Product Certification) RAL 438, which in fact takes into account total VOS emissions that are lower than 650 g/m³ (micrograms/cubic meter).

Therefore we can affirm that the product tested features: **A LOW LEVEL OF VOS EMISSIONS**

Formaldehyde emissions (a method recognized by European markets):

Products Tested:

- Gallia Tanganika Tinto Door
- Gallia Laccato Door

Result achieved:

Formaldehyde: <0.1 ppm (parts per million)

N.B.:

E1 classification for the emission of formaldehyde is originally intended for raw materials. However, it can be reasonably extended to Doors as a whole; therefore we can affirm that products attain a result that complies with: CLASSIFICATION E1

By virtue of certain market requests that involve having products with an extremely low emission of formaldehyde, Japan (the leading country with regards to regulations), carried out tests on doors made with materials that were specifically chosen and achieved the best desirable result for the Japanese market, that is : CLASSIFICATION SUPER E0

Quality Assurance, Control & Certifications

IQNET Certification for Quality Management:

In 2006, ICILA (the Institute for the Certification Standard Quality and Services for Enterprises of the Wood and Furnishing Industry) issued COCIF with the latest renewal of CISQ and IQNet certificates of conformity to the UNI EN ISO 9001:2000 norm, in relation to its own Company Quality System and with respect to the production of wooden door and window fittings.

Confirmed over the years, the company's specialty of Quality Assurance, which is embedded in all its production sectors, accentuates an image and values that COCIF sustains with assiduity and investments. A modern and efficient company uses its strategies along the lines of excellence.

These not only reflect the instructions of an attentive management team but also set the basis for commercial success in Italy and mostly abroad, where sensitivity and attention paid to the quality of procedures and products, plays an essential strategic role.

The awareness and sharing of Quality levels and procedures today have become part of the heritage of the entire company and of all its branches. By implementing the most innovative and modern solutions required to sustain and improve the quality standards achieved, employees, personnel and suppliers support this strategic initiative.

Responsibility Use of Raw Materials (FSC & PEFC):

Use of wood from forests managed according to high forestry management standards:

- FSC Chain of Custody Seal (recognized at world level):

This seal is only applied to doors and windows if the ability to track backwardly the timbers used in manufacture of the products to be sealed can be guaranteed, through separation/identification of the raw materials at both warehouse and woodworking level.

Therefore, it must be proven that the products to be FSC sealed are made from materials originating from the suppliers who adhere to FSC protocol, which requires forestry management according to strict environmental, social and economic standards.

- PEFC Chain of Custody Seal (recognized at European Level):

Similarly to the FSC, this organization promotes sustainable forestry management, and uses similar methods.

To date, only 2 Italian companies are PEFC Chain of Custody certified and none are certified for forestry management.

At European level, however, many sawmills used by COCIF have already obtained this certification, such as the Swedish companies

Safety and Prevention

Quality of life highly depends on the quality of work. Coordinated by the person responsible for the service, Eng. Alessandro Montanari, they were directed towards the analysis of various aspects involving the improvement of workers health and safety conditions.

In particular, in the preparation of investment budgets, possible improvements to work and safety conditions for operators have always been analyzed in detail, in addition to technical and automation related advances.

During the three year period 2004-2005-2006, the total amount invested for the realization of systems directly aimed to improve health and safety conditions, or targeted towards technical improvements with a significant influence on the above, was equal to Euros 1,350,000.

Among the most significant operations we especially point out the following:

- The replacement of the entire automatic press line for doors, with the benefits of reduced exposure to adhesives and of reduced strain caused by the movement of heavy weights. Thanks to the introduction of a new glue spreader equipped with a mixer for automatically amalgamating the glue components originating from the small tanks (therefore preventing operators from intervening directly on adhesives) and thanks to the insertion of an automatic device that collects the parts from the glue spreader and positions them on the working top where employees operate, the latter are further away from the glue spreader itself and do not need to lift and move door panels manually.
- The replacement of the finishing system's spraying units for frames, which benefits the working environment by reducing dirt and cleaning activities. Improved efficiency in the application of paint on parts, reducing overspray, allowed to reduce dirt, consequently cleaning, and also to decrease the amount of waste deriving from cleaning activities.

- The insertion of a robot for the automatic output of doors to the end of the packaging line with the benefit of reducing strain caused by the movement of heavy loads.
- The insertion of a new hangar equipped for the production of rolling shutter boxes and staff beads in blockboard, with 6 automation devices for loading and unloading parts from working lines, with the benefit of reducing strain caused by the movement of loads.
- Introduction of a machine for the automatic application of trim on the panels and of a bench for screwing hardware on shutters and slats which allow to move the parts vertically instead of horizontally, with the benefit of reducing the manual movement of heavy loads.
- Installation of an anti-noise cabin to the mortise situated in the frame production department, with the benefit of reducing noise. This new cabin allowed a net reduction of the level of exposure for the machine's operator (-12dB), with a consequent positive effect for the other employees in the department (note that a reduction of 3dB means cutting the noise by half).
- Installation of a series of systems for the input of hot air, located above the doors of the sawmill area, in order to block internal cold air currents every time these doors are opened, with the benefit of improving the microclimate.

Health monitoring operations are also pursued, through periodic health visits to those exposed to specific risks: such as noise, contact with paint and adhesives, manual movement of heavy weights.

Over the course of the three year period 2004-2005-2006, 515 health checks were carried out and no-one was diagnosed with profession related illnesses or diseases connected to duties carried out.





CERTIFICATO N. **490**
 CERTIFICATE N.

SI CERTIFICA CHE IL SISTEMA DI GESTIONE PER LA QUALITÀ DI
 WE HEREBY CERTIFY THAT THE QUALITY MANAGEMENT SYSTEM OPERATED BY

COCIF Società Cooperativa

Via Ponte Ospedaletto 1560 - 47020 Longiano (FC)

UNITÀ OPERATIVE
 OPERATIVE UNITS

Via Ponte Ospedaletto 1560 - 47020 Longiano (FC)

È CONFORME ALLA NORMA
 IS IN COMPLIANCE WITH THE STANDARD

UNI EN ISO 9001:2008

PER LE SEGUENTI ATTIVITÀ
 FOR THE FOLLOWING ACTIVITIES

EA : 6

Progettazione e produzione di serramenti

Design and manufacturing of wooden doors and windows

Riferirsi al Manuale Qualità per l'applicabilità dei requisiti della Norma
 Refer to Quality Manual for details of application to the standard requirements

L'uso e la validità del presente certificato sono soggetti al rispetto del Regolamento per la certificazione dei Sistemi di Gestione per la Qualità. La validità del presente certificato è subordinata a sorveglianza periodica ed al riesame del Sistema con periodicità triennale.
 The use and validity of this certificate shall satisfy the regulation for the certification of Quality Management Systems. The validity of this certificate is subject to periodical audits and to the re-audit of the System every three years.

PRIMA EMISSIONE FIRST ISSUE	EMISSIONE CORRENTE CURRENT ISSUE	DATA DI SCADENZA EXPIRING DATE
27/07/2001	30/11/2009	15/09/2012

Carina Gu...
 ICILA S.r.l. - Piazzale Giotto 1 - 20035 Lissone (MB)
 www.icila.org - info@icila.org

CISQ is a member of



www.iqnet-certification.com

IQNet, the association of the world's first class certification bodies, is the largest provider of management System Certification in the world. IQNet is composed of more than 30 bodies and counts over 150 subsidiaries all over the globe.

CISQ è la Federazione Italiana di Organismi di Certificazione dei sistemi di gestione aziendale

CISQ is the Italian Federation of management system Certification Bodies



www.cisq.com



SGQ N°013A
 SGA N°011D
 PRO N° 084B

Membro di MLA EA per gli schemi di accreditamento SGQ, SGA, PRO e PPS e di MLA INF per gli schemi di accreditamento SGQ, SGA, e PPS
 Signatory of EA MLA for the accreditation schemes QMS, EMS, Product and Personnel and of INF MLA for the accreditation schemes QMS, EMS and Product



THE INTERNATIONAL CERTIFICATION NETWORK

CERTIFICATE

IQNet and its partner
CISQ/ICILA

hereby certify that the organization

COCIF Società Cooperativa

Via Ponte Ospedaletto 1560 - 47020 Longiano (FC)

for the following field of activities

Design and manufacturing of wooden doors and windows

has implemented and maintains a

Quality Management System

which fulfills the requirements of the following standard

ISO 9001:2008

Issued on: **2009-11-30**

Validity date: **2012-09-15**

Registration Number: **IT-23307**



René Wasmer
 René Wasmer
 President of IQNET



Gianrenzo Prati
 Gianrenzo Prati
 President of CISQ

IQNet partners*:

- AENOR Spain AFAQ AFNOR France AIB-Vinçotte International Belgium ANCE Mexico APCER Portugal CISQ Italy CQC China
- COM China CQS Czech Republic Cro Cert Croatia DQS Germany DS Denmark ELOT Greece FCAV Brazil
- FONDONORMA Venezuela HKQAA Hong Kong China ICONTEC Colombia IMNC Mexico Inspecta Certification Finland
- IRAM Argentina JQA Japan KFQ Korea MSZT Hungary Nemko AS Norway NSAI Ireland PCBC Poland QMI Canada
- Quality Austria Austria RR Russia SAI Global Australia SII Israel SIQ Slovenia SIRIM QAS International Malaysia
- SQS Switzerland SRAC Romania TEST St Petersburg Russia YUQS Serbia

IQNet is represented in the USA by: AFAQ AFNOR, AIB-Vinçotte International, CISQ, DQS, NSAI Inc., QMI and SAI Global

*The list of IQNet partners is valid at the time of issue of this certificate. Updated information is available under www.iqnet-certification.com

Registration Certificate



Certificate Number 150

20 November 2010 20 November 2010 19 November 2013
 Date of Initial Registration Date of Last Issue Date of Expiry

This is to certify that the following company

COCIF SOCIETÀ COOPERATIVA
 Via Ponte Ospedaletto 1560
 47020 Longiano (FC)
 Italy

*meets the requirements of: BS 476 Part 22
 for Fire Doors within the*

**BM TRADA Certification Limited
 International scheme for Q-Mark Fire Doors**

Annex: A. Region: 2.

The company agrees to maintain its fabrication of Fire Doors in accordance with the rules laid down by BM TRADA Certification Limited and to use the Q-Mark in accordance with the Regulations

Signed on behalf of BM TRADA Certification Ltd

For verification of this certificate please visit www.bmtrada.com



The use of the accreditation mark indicates accreditation in respect of those activities covered by the accreditation certificate 012

Registration Schedule



Certificate Number 150

<u>Establishment</u>	<u>Address</u>
COCIF SOCIETÀ COOPERATIVA	Via Ponte Ospedaletto 1560 47020 Longiano (FC) Italy

<u>Scope</u>		
Chilt/A01204	Cocif – HO – 30	30 min
Chilt/A01205	Cocif – HO – 60	60 min
Chilt/A05151	Cocif – HE – 90	90 min
FEA/F97174	Cocif – HP – 30	30 min
FEA/F96103	Cocif – HP – 60	60 min

20 November 2010 20 November 2010 19 November 2013
 Date of Initial Registration Date of Last Issue Date of Expiry

For verification of this certificate please visit www.bmtrada.com

The use of the accreditation mark indicates accreditation in respect of those activities covered by the accreditation certificate 012


 دولة الإمارات العربية المتحدة
 وزارة الداخلية
 الإدارة العامة للدفاع المدني
 إدارة الحماية المدنية والسلامة

ترخيص وكيل

رقم الترخيص: 1/A/474

صدر هذا الترخيص استناداً إلى القانون الاتحادي رقم ٣ لسنة ١٩٧٩ بشأن الدفاع المدني وتعديلاته والقرارات الوزارية المنفذة له .

• الاسم التجاري للمنشأة: كسفورد للوكالات التجارية.
 • اسم صاحب الترخيص: عبد الله أحمد محمد أحمد خليل.

• وكيل أجنبي : الإمارات العربية المتحدة .
 • الجنسية : الإمارات

• نوع النشاط : أبواب خشبية مقاومة للحريق .
 • تاريخ بداية المنشأة : 2010/5/3

• تاريخ الإصدار : 2010/5/3
 • تاريخ الانتهاء : 2011/5/2

• المعدات والأجهزة والمواد المرخصة من رقم : (1) إلى : (//)

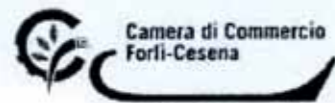
مدير إدارة الحماية المدنية
 مدير عام الدفاع المدني

اسم المنشأة: كسفورد للوكالات التجارية.

رقم الترخيص: 1/A/474

مُشَفَّه بالمعدات والأجهزة والمواد المعتمدة طبقاً للترخيص

رقم	اسم المعدة / الجواز / المادة	النوع	بلد السبع	رقم تسجيل الوضاعة	منطقة الوضاعة
1	أبواب خشبية مقاومة للحريق لمدة (30,60,90) دقيقة	COCIF SOCIETA COOPERATIVA	إيطاليا	11085	الإمارات
2					
3					
4					
5					
6					
7					
8					
9					
10					
11					
12					
13					
14					
15					



Prot.:CEW/5923/2007/CF00355

6/12/2007

CAMERA DI COMMERCIO INDUSTRIA ARTIGIANATO AGRICOLTURA DI FORLÌ - CESENA
- UFFICIO REGISTRO DELLE IMPRESE -

CERTIFICATO DI ISCRIZIONE NELLA SEZIONE ORDINARIA

DATI IDENTIFICATIVI DELL'IMPRESA

Codice fiscale e numero d'iscrizione: 00124220401
del Registro delle Imprese di FORLÌ - CESENA
data di iscrizione: 19/02/1996

Iscritta nella sezione ORDINARIA 11 19/02/1996

Iscritta con il numero Repertorio Economico Amministrativo 29313 11 02/11/1945

Denominazione: "COCIF SOCIETA' COOPERATIVA" IN SIGLA "COCIF SOC. COOP."

Forma giuridica: SOCIETA' COOPERATIVA

Sede:
LONGIANO (FO) VIA PONTE OSPEDALETTO, 1560 CAP 47020

Costituita con atto del 07/08/1945

Durata della società:
data termine: 31/12/2025

Oggetto Sociale:
LA COOPERATIVA E' RETTA E DISCIPLINATA DAI PRINCIPI DELLA MUTUALITA' SENZA FINI DI SPECULAZIONE PRIVATA.
LO SCOPO MUTUALISTICO CHE I SOCI COOPERATORI INTENDONO PERSEGUIRE E' QUELLO DI OTTENERE, TRAMITE LA GESTIONE IN FORMA ASSOCIATA E CON LA PRESTAZIONE DELLA PROPRIA ATTIVITA' LAVORATIVA, CONTINUITA' DI OCCUPAZIONE E LE MIGLIORI CONDIZIONI ECONOMICHE, SOCIALI E PROFESSIONALI.
AI FINI DEL RAGGIUNGIMENTO DEGLI SCOPI SOCIALE E MUTUALISTICO, I SOCI, ALL'ATTO DELL'AMMISSIONE O SUCCESSIVAMENTE, ED IN RELAZIONE ALLA ATTIVITA' LAVORATIVA DA SVOLGERE, INSTAURANO CON LA COOPERATIVA UN ULTERIORE RAPPORTO DI LAVORO IN FORMA SUBORDINATA, CON LE CONSEGUENZE E GLI EFFETTI DEFINITI DALLE DISPOSIZIONI DI LEGGE PER LE DIVERSE TIPOLOGIE CONTRATTUALI.
LE MODALITA' DI SVOLGIMENTO DELLE PRESTAZIONI LAVORATIVE DEI SOCI SONO DISCIPLINATE DA APPOSITO REGOLAMENTO APPROVATO AI SENSI DELL'ART. 6 DELLA LEGGE 3 APRILE 2001, N. 142.
LA COOPERATIVA SI PROPONE ALTRESI' DI PARTECIPARE AL RAFFORZAMENTO DEL MOVIMENTO COOPERATIVO ITALIANO. PER CIO' STESSO LA COOPERATIVA PUO' ADERIRE ALLA LEGA NAZIONALE COOPERATIVE E MUTUE, ED AGLI ORGANISMI PERIFERICI PROVINCIALI E REGIONALI DI LEGACOOP NELLA CUI GIURISDIZIONE HA LA PROPRIA SEDE SOCIALE.
SU DELIBERAZIONE DEL CONSIGLIO DI AMMINISTRAZIONE, ESSA PUO' ADERIRE AD ALTRI ORGANISMI ECONOMICI O SINDACALI CHE SI PROPONGONO INIZIATIVE DI ATTIVITA' MUTUALISTICHE, COOPERATIVISTICHE, DI LAVORO O DI SERVIZIO.
LA COOPERATIVA POTRA' SVOLGERE LA PROPRIA ATTIVITA' ANCHE CON TERZI, AI SENSI DELL'ART. 2521 C.C..
RIGUARDO AI RAPPORTI MUTUALISTICI LA COOPERATIVA DEVE RISPETTARE IL PRINCIPIO DELLA PARITA' DI TRATTAMENTO.
LA COOPERATIVA, CON RIFERIMENTO AI REQUISITI E AGLI INTERESSI DEI SOCI, HA PER OGGETTO:
1. LA GESTIONE DI UNA IMPRESA PER COSTRUZIONI DI SERRAMENTI, INFISSI, MOBILI, ARREDI E AFFINI IN LEGNO, FERRO ED ALTRE MATERIE PER CONTO DI ENTI PUBBLICI E PER CONTO DI PRIVATI;
2. UNA ATTIVITA' DI NATURA IMMOBILIARE CON COSTRUZIONE DI FABBRICATI IN CORRELAZIONE CON L'OGGETTO PRINCIPALE, COME PURE INIZIARE ALTRE ATTIVITA', IN MANIERA COMUNQUE NON PREVALENTE, UTILI E NECESSARIE AL PERSEGUIMENTO DELLA

Executive Summary

Objective	This report presents an appraisal of the fire resistance performance of a single-acting, single-leaf timber doorset, if subjected to a fire resistance test in accordance with Clause 6 of BS 476: Part 22: 1987.
Sponsor	COCIF Soc. Coop.
Address	Via Ponte Ospedaletto, 1560 47020 - Longiano (FC) Italy
Summary of Conclusions	It can be concluded that the proposed timber doorset should be capable of providing 60 minutes integrity and insulation performance, if subjected to a fire resistance test in accordance with Clause 6 of BS 476: Part 22: 1987.
Valid until	1 st June 2011

This report may only be reproduced in full. Extracts or abridgements of reports shall not be published without permission of warringtonfire.

Validity

This assessment is issued on the basis of test data and information available at the time of issue. If contradictory evidence becomes available to warringtonfire the assessment will be unconditionally withdrawn and COCIF Soc. Coop. will be notified in writing. Similarly the assessment is invalidated if the assessed construction is subsequently tested because actual test data is deemed to take precedence over an expressed opinion. The assessment is valid initially for a period of five years i.e. until 1st June 2011, after which time it is recommended that it be returned for re-appraisal.

The appraisal is only valid provided that no other modifications are made to the tested construction other than those described in this report.

Summary of Primary Supporting Data

5/U/05-17FR	A fire resistance test performed in accordance with UNI-9723: 1990/A1: 1996 on two specimens of an identical, single-acting, single-leaf, timber doorset referenced PORTA REI60 LT E 34dB, one opening towards the heating conditions and the other away from the heating conditions.
	The doorsets had overall dimensions of 2160 mm high by 1020 mm wide and incorporated door leaves with overall dimensions of 2121 mm high by 948 mm wide.
	Both doorsets provided 66 minutes integrity performance. Integrity failure of the inward opening doorset was caused by ignition of the cotton pad at the latch position. The outward opening doorset satisfied the performance criteria for the test duration of 66 minutes.
Test date	: 5 th January 2006
Test sponsor	: COCIF Soc. Coop.



COCIF
Società Cooperativa
Via Ponte Ospedaletto, 1560 Longiano (FC) Italy
Tel 0547 56144 - Fax 0547 54094
info@cocif.com - www.cocif.com

